



PU 系列电磁阀
PU Series Solenoid Valve



订购码
Ordering code

PU **220** **01** - **AC110V** - **E**

规格代码
PU:二位二通电磁阀
Specification code
2W:2/2 way solenoid valve

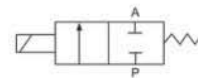
动作方式
Acting type
160:16mm
200:20mm
250:25mm
350:35mm
400:40mm
500:50mm

接管口径
Port size
10:G3/8"
15:G1/4"
20:G3/4"
25:G1"
35:G1 1/4"
40:G1 1/2"
50:G2"

标准电压
Standard voltage
DC12V
DC24V
AC24V 50Hz/60Hz
AC36V 50Hz/60Hz
AC110V 50Hz/60Hz
AC220V 50Hz/60Hz
AC380V 50Hz/60Hz

油封代号
空白: NBR
E: EPDM (蒸汽用)
V: VITON
(高温、瓦斯及真空用)
Oil seal code
Blank: NBR
E: EPDM(For Steam)
V: VITON(For high temperature, gas and vacuum)

符号
Symbol

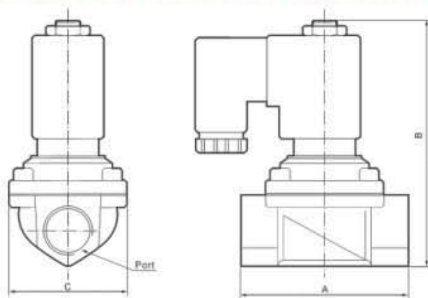


规格
Specifications

型号 Model	PU220-01	PU220-02	PU220-03	PU220-04	PU220-06	PU220-08
工作介质 Fluid	空气、水、油 Air, Water, Oil					
动作方式 Acting type	220:直动式 Direct drive type		225:先导式 pilot type			
型式 Type	常闭型 Normal close-type					
流量孔径mm Aperture of flow rate	1.5	2.3	8	13	20	25
CV值 CV value	0.10	0.18	1.00	4.00	8.60	11.00
接管口径 Port size	G1/8"	G1/4"	G3/8"	G1/2"	G3/4"	G1"
使用流体粘滞度 Operation fluid viscosity	20 CST以下 (Below)					
使用压力 Working pressure	0.1~1.5MPa					
最大耐压力 Max. Pressure resisance	2.25MPa					
工作温度范围 Working temperature range	-5 ~ +80°C					

*特殊电压及特殊规格请与厂房接洽
*Please contact Factory for special voltage and Specification

尺寸
Dimensions



型号 Model	口径 Port	A	B	C
PU220-1	G1/8"	72	22	22
PU220-2	G1/4"	35	75.5	25.4
PU220-3	G3/8"	55	79.5	30
PU220-4	G1/2"	66.5	101	48
PU220-6	G3/4"	71	107	48
PU220-8	G1"	96	120	70